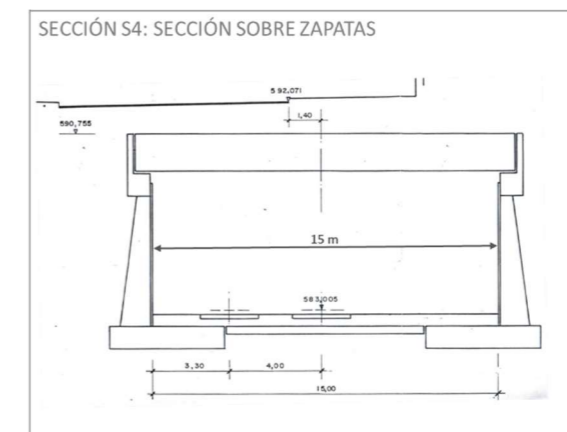
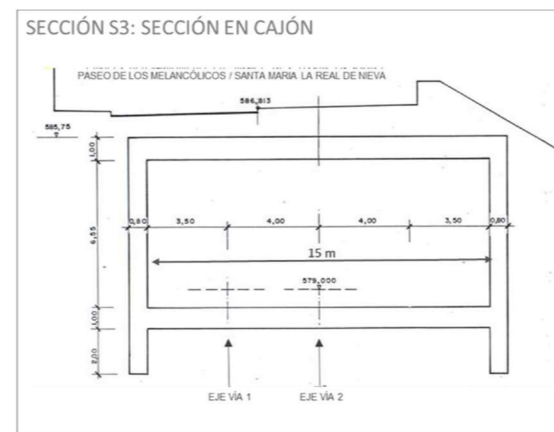
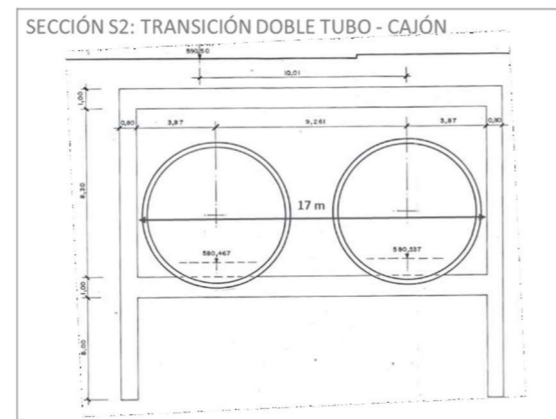
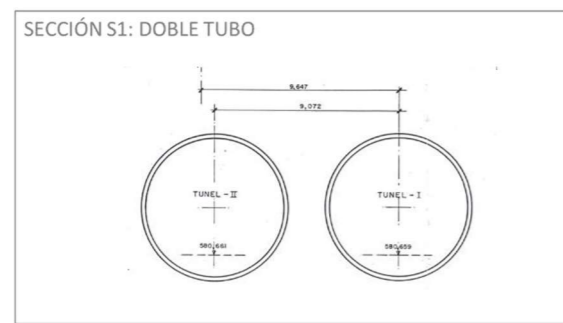
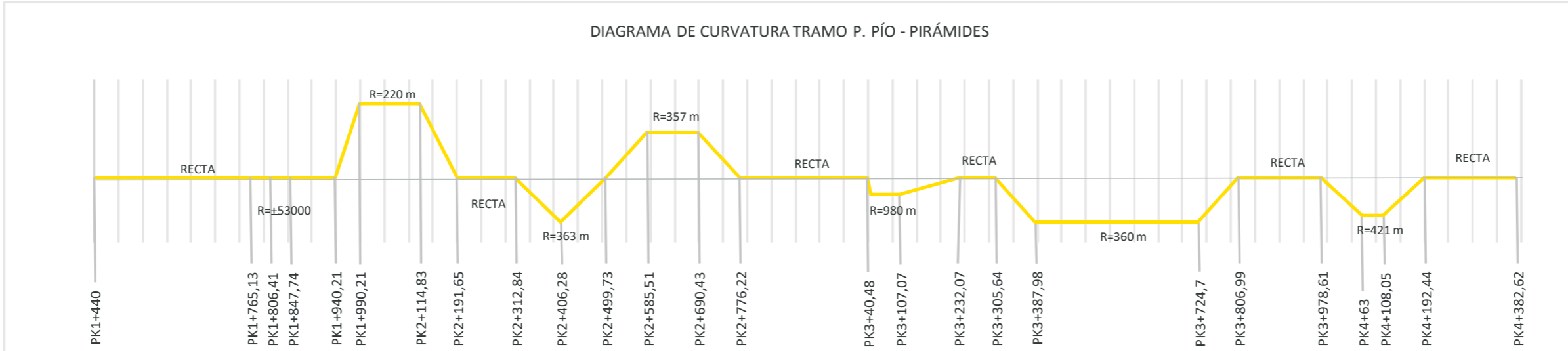
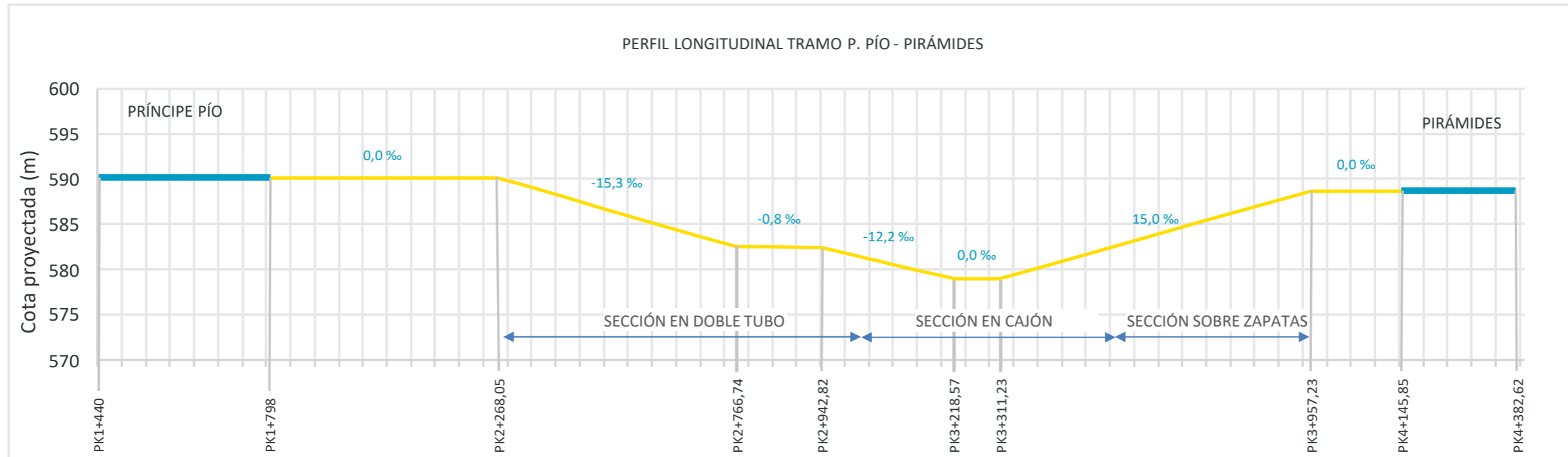
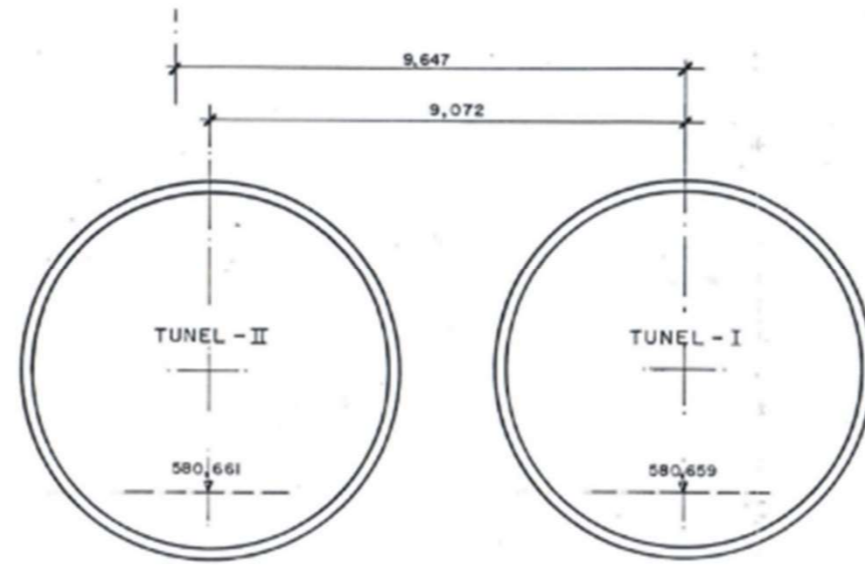


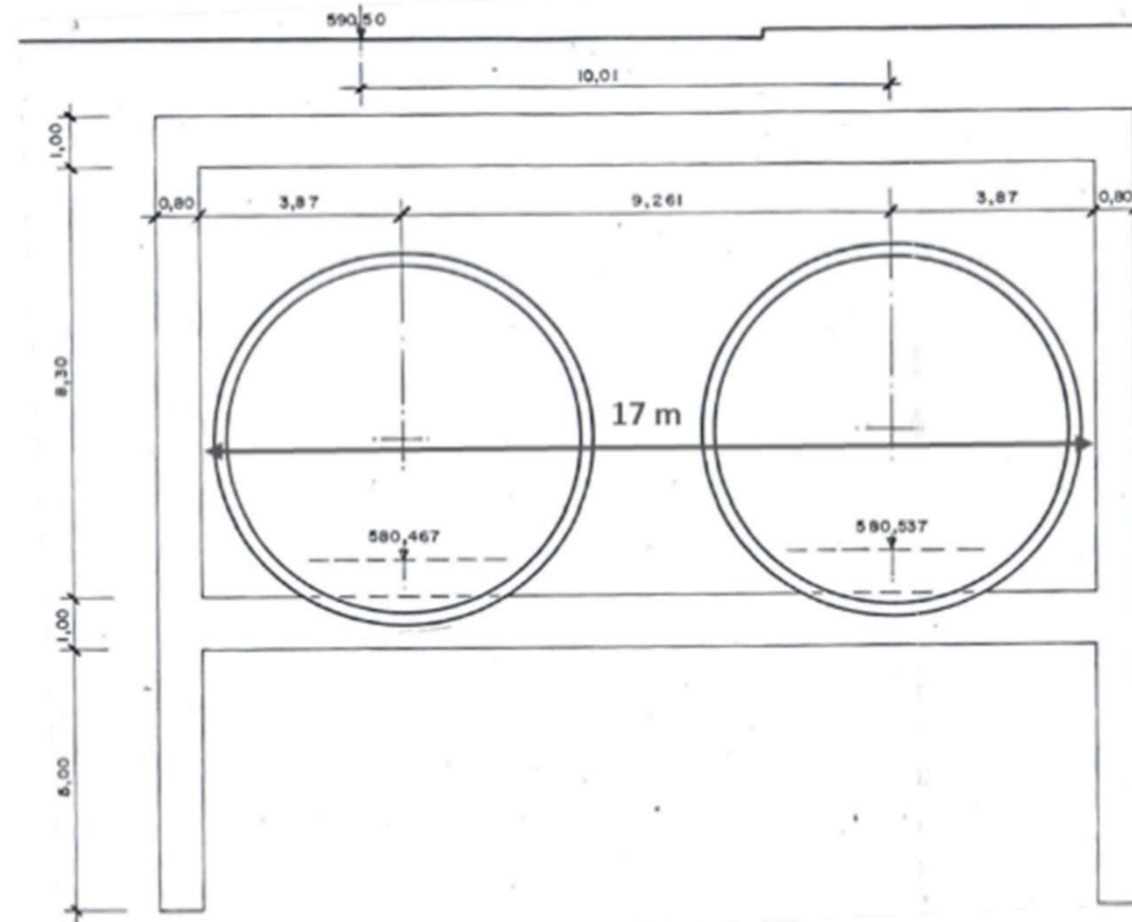
ANEXO I



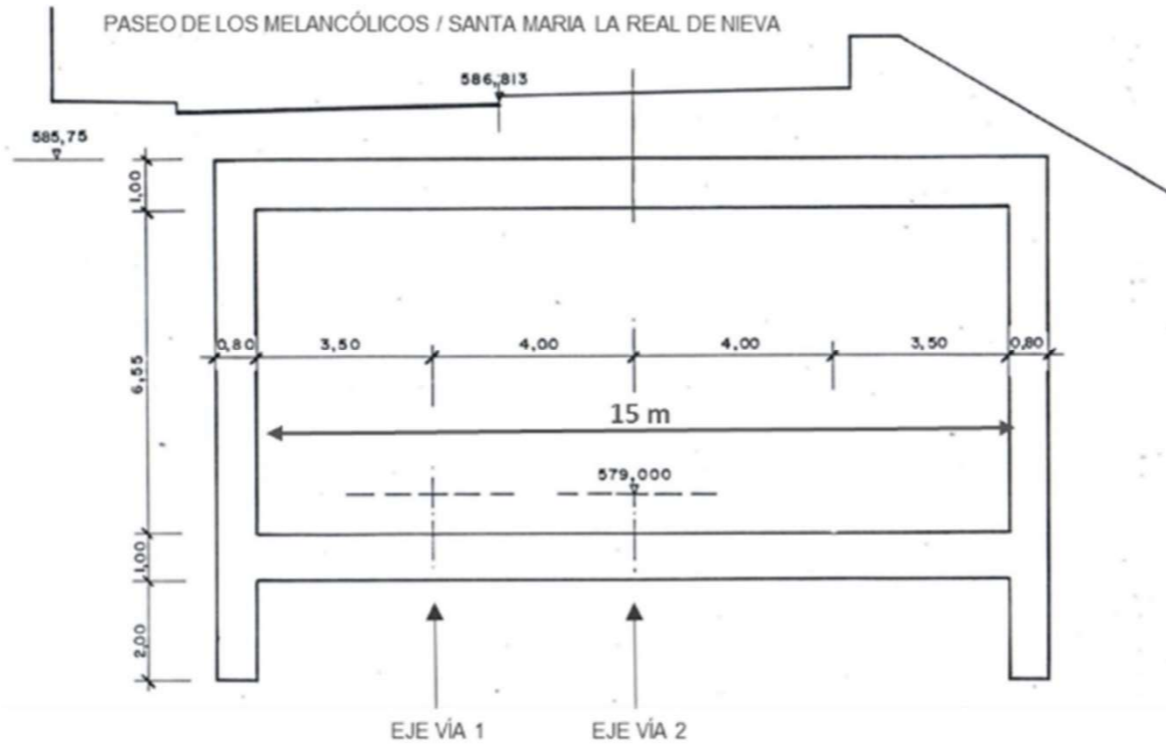
SECCIÓN S1: DOBLE TUBO



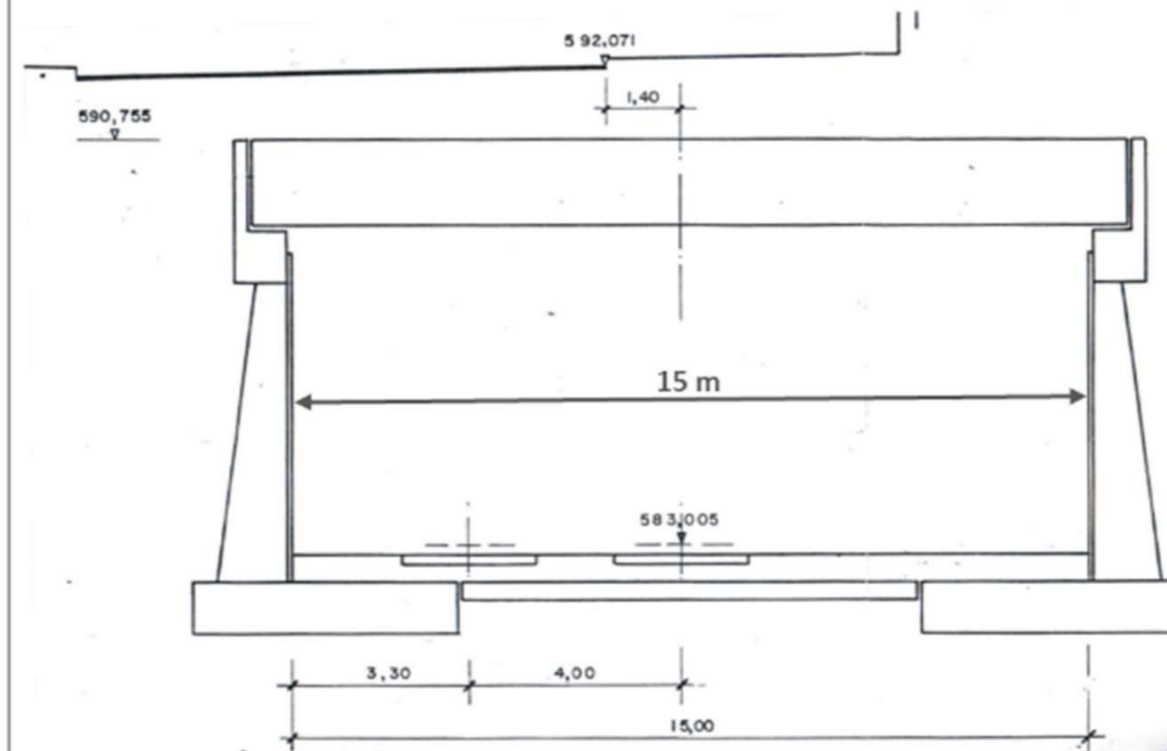
SECCIÓN S2: TRANSICIÓN DOBLE TUBO - CAJÓN



SECCIÓN S3: SECCIÓN EN CAJÓN

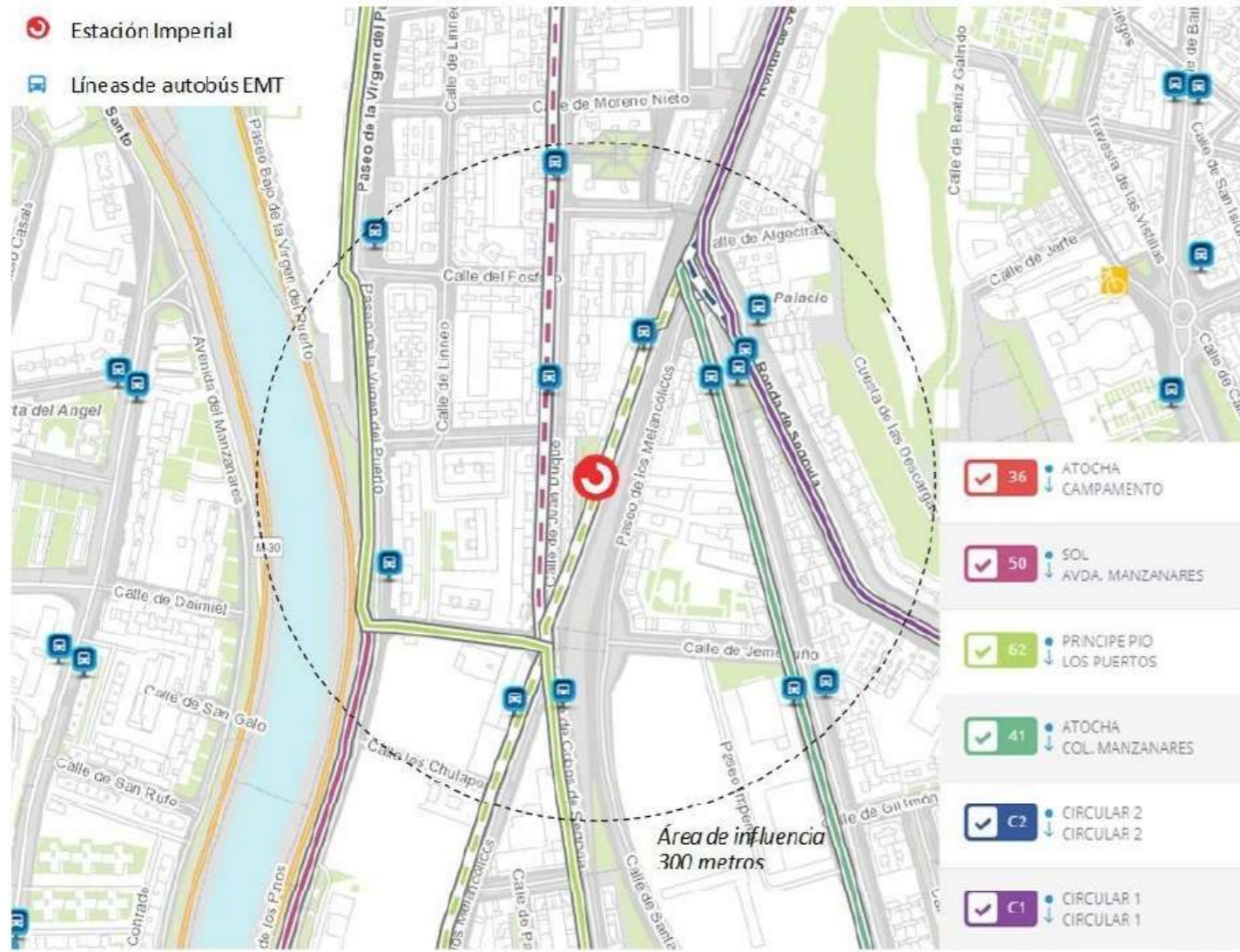


SECCIÓN S4: SECCIÓN SOBRE ZAPATAS

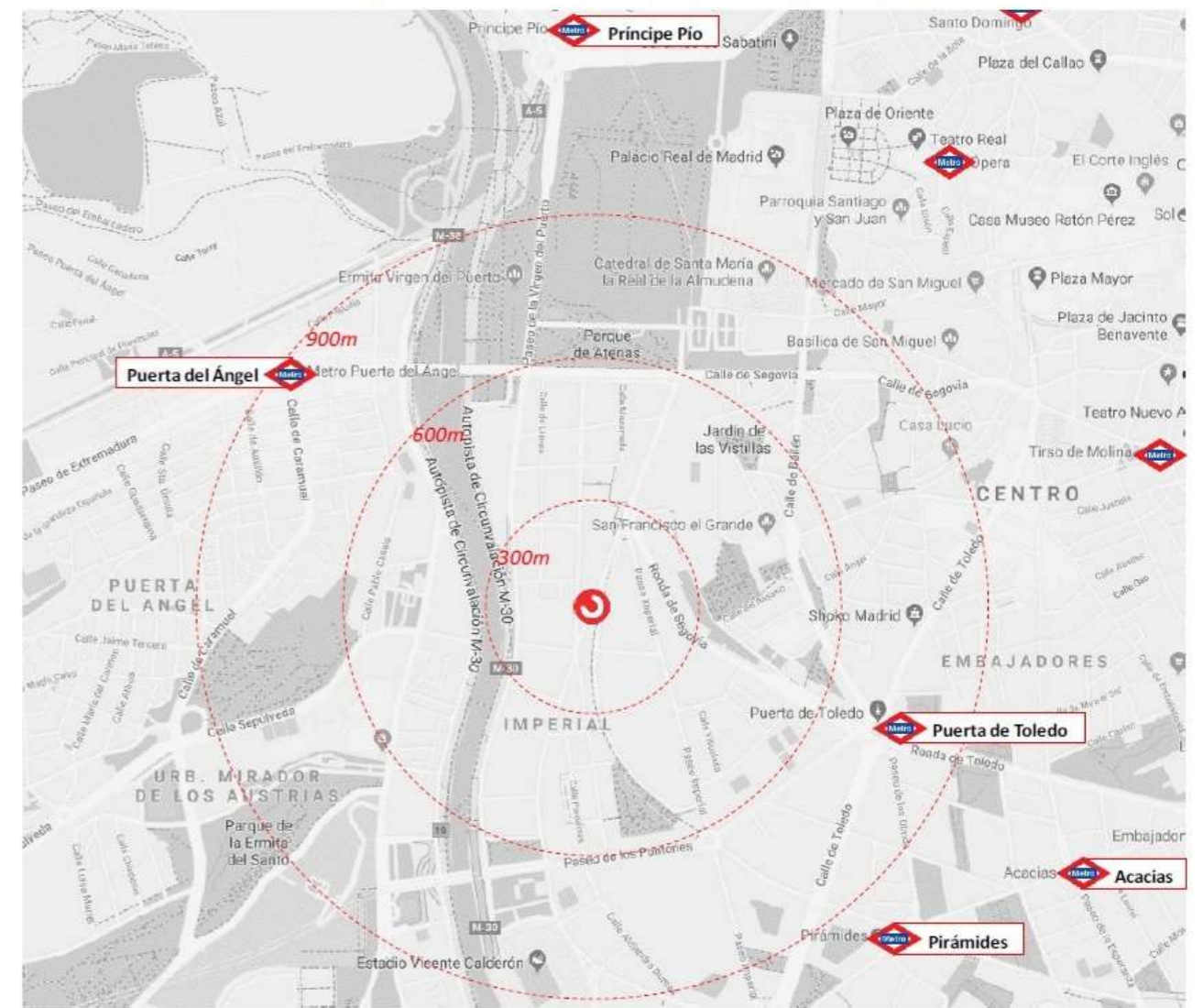


ANEXO II

Área de influencia de la Estación Imperial a 300 m respecto a la red de autobuses urbanos

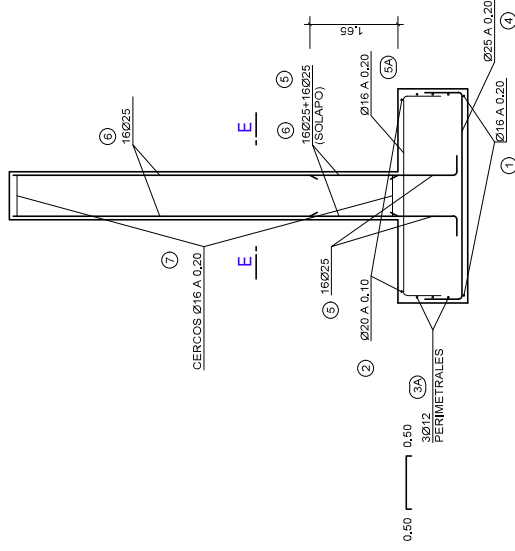
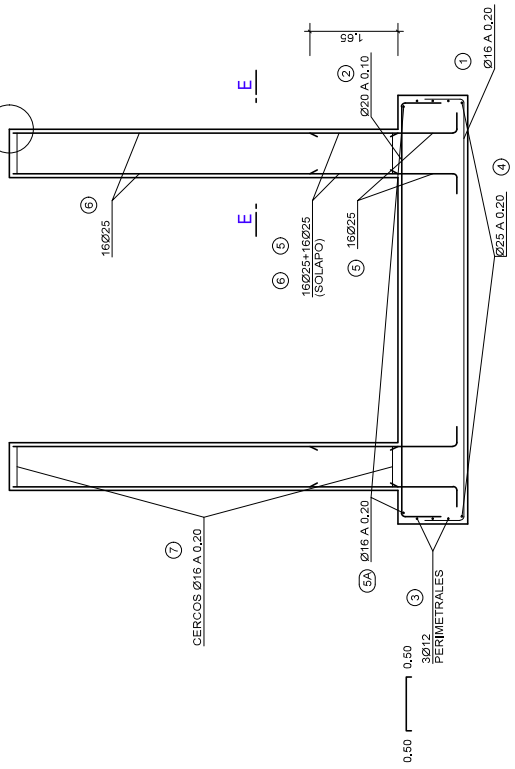


Área de influencia de la Estación Imperial respecto a la red de Metro



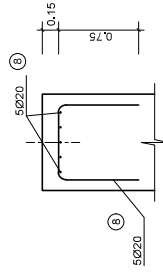
PLANO Nº 3

VER DETALLE DE ARMADURA
ADICIONAL EN CORONACIÓN

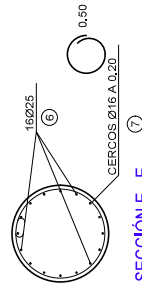


SECCIÓN A - A (ARMADURA)

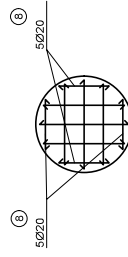
SECCIÓN B - B (ARMADURA)



ARMADURA ADICIONAL
EN CORONACIÓN



SECCIÓN E - E



PLANTA DE ARMADURA
ADICIONAL EN CORONACIÓN